



Our Engineering Your Satisfaction...



Poultry & Cattle feed Pellet Plants

Since Khare Agromech (KAM) established in 1992 grown as a well-known engineering industry in manufacturing animals & poultry feed plants & machineries.

Khare Agromech (KAM) covers project designs, Feed Machinery manufacturing, steel structural's electrical, control panel & control systems, storage engineering, grain handling & processing, dust collection systems, research & development, installation, commissioning & services.

Khare Agromech (KAM) has adequate specialized staff to manufacture equipments, to give prompt services, to have continuous development & innovations. Other than animal & poultry feed plant manufacturing. Khare Agromech (KAM) has developed expertise in biomass pellet plant, organic fertilizer plants, food industries, shell grit plants, fish meal plants, premix plants etc.

Till date Khare Agromech (KAM) has given turnkey solutions to many reputed farmers & feed manufacturers all over the world.

Over the years Khare Agromech (KAM) has procured many advance technologies & equipment's in its infrastructure, also have best painting & surface treatment facilities.

As KhareAgromech (KAM) is tagged with ISO 9001-2008 certificate all in-house quality & inspection systems are in place.



ISO 9001:2015
Certified Company



Broiler Chicken Feed comes in many forms, including Mash, Pellet and Crumble.

Mash typically results in some waste due to separation of grains (coarse particles) from other ingredients and supplements that result in the flicking behavior of chickens. This problem is solved in pellet feed that produces uniform proportions and improved digestion of nutrients in broiler chickens. Crumbles add an additional step to Pellet production by taking the Pellets and Crushing them into a consistency that's courser than Mash.

Pellet/Crums Produces a higher nutrient density and improves digestibility, thereby increasing animal performance while creating superior feed efficiency.

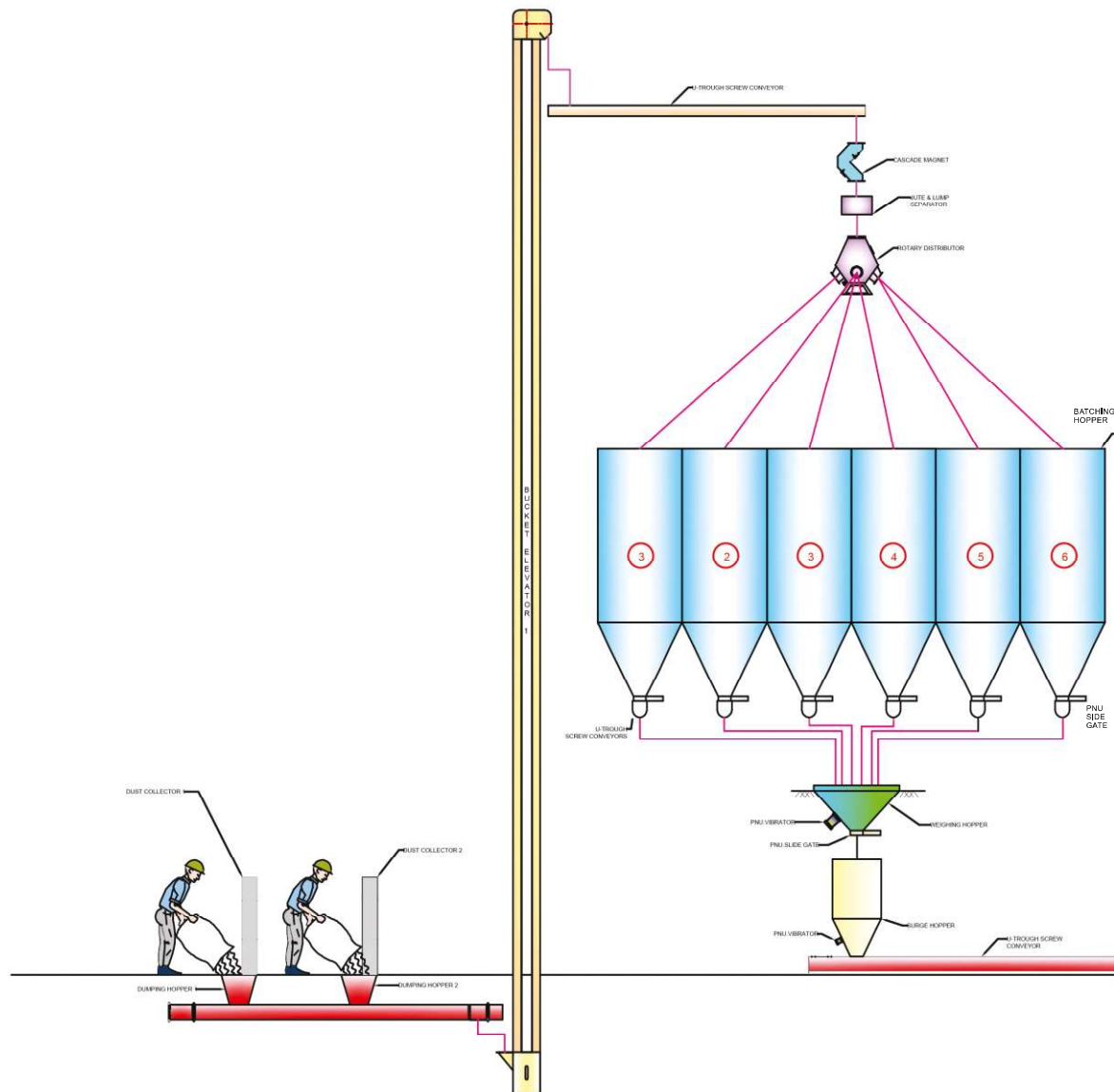
Our Expertise are of Manufacturing the Pellet Plants as stated below.

Total Pellet Plant incorporate the Key Machineries & Systems are-

- Auto Batching
- Full Sieve Hammer Mill
- Mixer
- Pellet Mill
- Cooler
- Crumbler
- Sieveing & Bagging

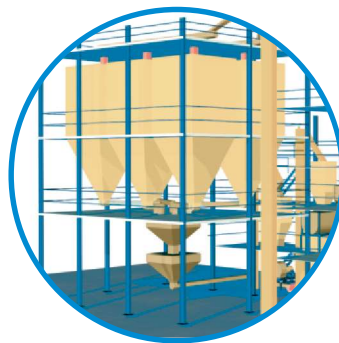
We Offer Pellet Plant of capacities :

- **2 - 2.5 Tons/Hr (50 TPD) Semiautomatic**
- **4 - 5 Ton/Hr (100 TPD) Semiautomatic**
- **4 - 5 Ton/Hr (100 TPD) Automatic(With Auto Batching & Auto Bagging)**
- **7 – 8 Ton/Hr (150 TPD) Semiautomatic**
- **7 – 8 Ton/Hr (150 TPD) Automatic(With Auto Batching & Auto Bagging)**
- **9 - 10 Ton/Hr (200 TPD) Semiautomatic**
- **9 - 10 Ton/Hr (200 TPD) Automatic(With Auto Batching & Auto Bagging)**
- **12-12.5 Ton/Hr (240-250 TPD) Automatic(With Auto Batching & Auto Bagging)**



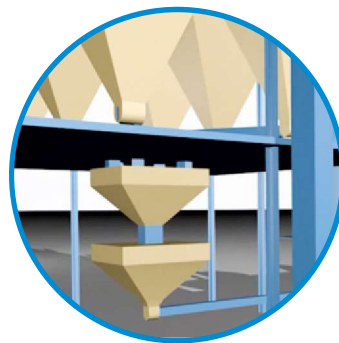
Raw Material Intake

The Chain Conveyor transfers Raw Material to the Bucket Elevator which is Feeding the Raw material to Batching Bins.



Auto Batching

The Bins Holds the Different Raw Materials for Batching & equipped with Sensors. For Batch Formation the Raw Material is Transferred to Weigh Bin through Screw Conveyors.



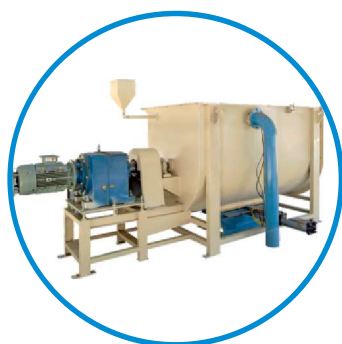
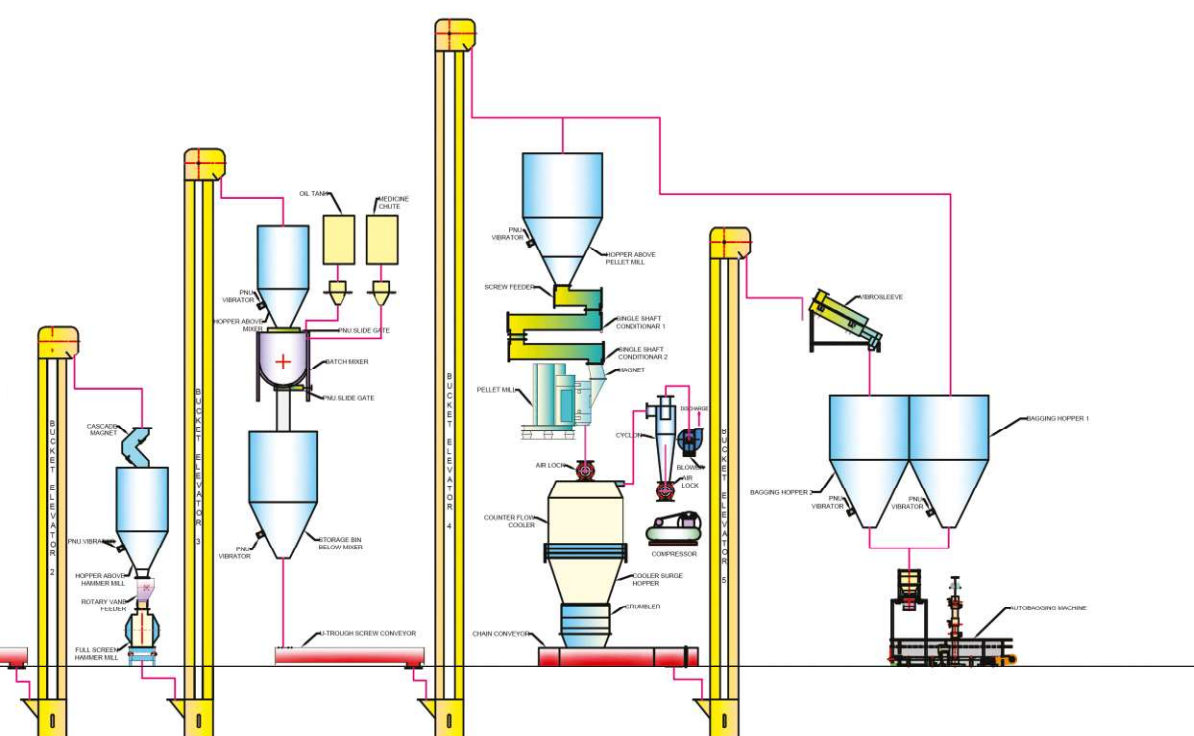
Weighing

Batch is Formed as per the recipe & weighed. Assures a exact batch as per the formulation. The weighed batch is Transferred for further process of Grinding.



Grinding Section

A Hammer Mill where the raw material is crushed to a desired size for Pelletting. Rotary Vane Feeder assures evenly feeding to Hammer Mill



Mixing Section

The Ground Powder Material from Hammer Mill get evenly Mixed in to the Mixer. The Mixer is Ribbon Type/Double Shaft Paddle/Single Shaft Paddle Type.



Pelleting section

Pellet Mill is equipped with a Screw Feeder & Multi Conditioners. Multi Conditioners assures the Cooking of Material. Our Conditioner so designed to give Optimum Residual Time



Cooling Section

The Hot pellets should be Cooled to Atmospheric Temperature. The Cooler is Counter Flow & Batch Type. Equipped with sensor.

Crumbler

The Cooled Pellets are further reduced in small Pieces in Crumbler.



Bagging

The Ready Feed is bagged through Bagging Unit. It assures the weigh Accuracy while bagging the Feed. The facility of weighing bag of different weight along with Production record is incorporated.

Salient Features -

- Either Gravity fall Bottom discharge type or with pneumatic suction arrangement.
- Low maintenance cost.
- Sturdy and robust construction.
- Easy and labour friendly Screen and hammer changing.
- Rotary feeder can be attached for feeding and hammer mill Motor can be synchronized with Feeder Motor.
- Best Possible output to input ratio.
- Vibration dampers are used to absorb the vibrations.
- Hammer mill Rotor is dynamically balanced.
- Hardened hammers in various grades depending upon application.
- Screens with wide range of hole diameters from 0.75 mm to 50 mm and various thickness.
- Highly efficient due to use of maximum screening area per H.P. and higher tip speeds.
- Removal of rotor & changing of bearing is very quick & easy.
- Available in all grades of stainless steel & M.S. construction as per customers requirements.



Applications -

- Poultry Feed, Cattle Feed, Shrimp Feed, Pig Feed, Fish Feed, Organic Fertilizers, All types Grains, Bio mass etc.

* Capacity mentioned is for broiler finisher/ layer formulation on 6mm dia hole screen.

* Capacity depends by characteristic of material and hole dia of screen.

HAMMER MILL (3000 RPM) (Capacity on 3mm Hole for Poultry Feed)

| Model | Screen Surface Area m ² | Power (H.P.)z | No. of Beaters | Capacity TPH |
|------------|------------------------------------|---------------|----------------|--------------|
| KAFHM 2402 | 0.427 | 10 - 20 | 24 - 32 nos. | 1.5 to 2 |
| KAFHM 2404 | 0.565 | 20 - 30 | 32 - 40 nos. | 2 to 3 |
| KAFHM 3006 | 0.95 | 40 - 60 | 48 - 64 nos. | 4 to 6 |
| KAFHM 3603 | 1.38 | 60 - 120 | 64 - 96 nos. | 8 to 10 |
| KAFHM 3604 | 2.076 | 100 - 150 | 112 - 128 nos. | 10 to 15 |

ROTARY VANE FEEDER

Description :- This is a equipment used to feed the raw material in to the grinder uniformly. This is fitted with a dynamically balanced rotor. The vanes are designed such that material is distributed across full width of the full screen Hammer mill.

Rotary vane feeder can be synchronised with full screen hammer mill and speed can be controlled using VFD (variable frequency drive) automatically or manually. We supply VFD control panels too.



Features

- ▶ Ribbon Blender is very fast and 100% efficient mixer to blend practically any dry powders, from food products to chemicals. Even liquids in small amount can also be mixed in very efficient way.
- ▶ Ribbon Blenders consist of U shaped horizontal trough and specially fabricated ribbon agitator.
- ▶ Ribbon agitator consists of a set of inner and outer blades. The outer blades move the material in one direction while inner blades move the material in exactly opposite direction.
- ▶ The ribbon blender is carefully designed to ensure thorough mixing with required CV (Coefficient of variation). Temperature rise is also minimum which is important when we consider vitamin mixing.
- ▶ Discharger gate can be manual or pneumatically operated for direct filling in bags or dumping in to storage bin.
- ▶ Blenders can be constructed in Mild Steel (MS) or Stainless Steel (SS) depending upon the material to be blended.
- ▶ The blender operates between 20 and 40 rpm.
- ▶ Fluid coupling can also be used as a optional. They are useful to start the mixer on load in case of sudden electric failures.
- ▶ Automatic oil spraying arrangement can be done..
- ▶ Dumping window at the top for addition of medicines and minerals.



Mixer Range

| Model | Working Capacity in Ltr | Capacity in Kg. for Poultry Feed Considers 0.6 gm/cc | HP |
|-------|-------------------------|--|---------|
| KARB | 250 | 150 Kg | 2-5 |
| KARB | 500 | 300 Kg | 3-7.5 |
| KARB | 875 | 500 Kg | 5-10 |
| KARB | 1750 | 1000 Kg | 10-20 |
| KARB | 2000 | 1200 Kg | 12.5-20 |
| KARB | 3500 | 2100 Kg | 25-50 |

Note :-

- ▶ Poultry feed density is considered as 0.6 gm/cc
- ▶ Capacities mentioned are of mixing chamber only but not total U trough.
- ▶ Please note that power mentioned is for dry mixing and can be varied depending upon densities of the material and speed of the mixer.
- ▶ Blending time is 3-6 minutes depending upon the required CV and characteristics of material being mixed.



Features

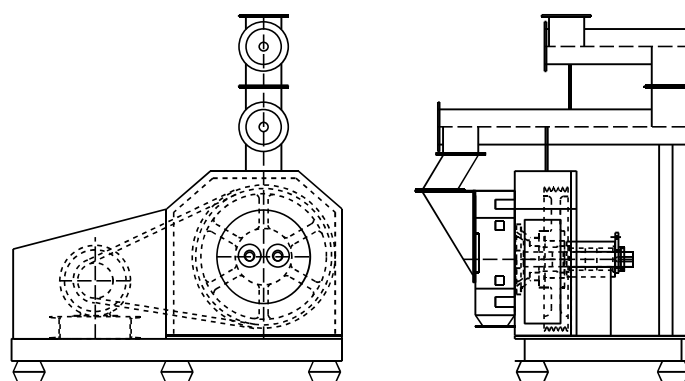
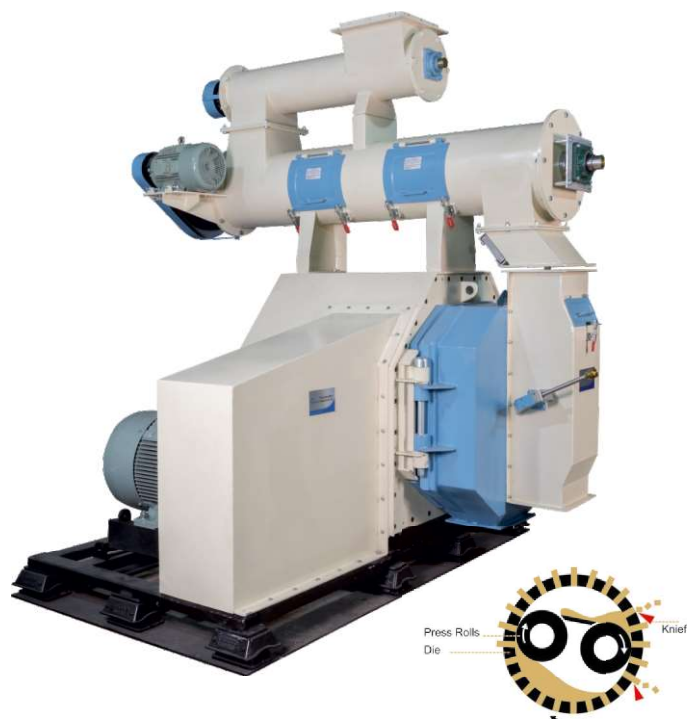
- ▶ W shape horizontal mixing chamber with dual shaft and multi paddles.
- ▶ Dual outlet doors are specially designed for maximum clean out
- ▶ Pneumatic door opening system.
- ▶ Liquid spraying system at the top for blending of liquids.
- ▶ Diversified applications like animal feed, Food, Spices, Pharmachemicals, Fertilizer industry etc.
- ▶ CV (coefficient of variation) - ≤ 3 depending upon the material being mixed.
- ▶ MOC in various grades like SS-304, SS-316, SS316L and MS.
- ▶ Sturdy and robust construction.
- ▶ Soft and gentle mixing without increase in temperature.

| MODEL | Power in H.P. | Batch Capacity In Ltrs. |
|-----------|---------------|-------------------------|
| DSPM-150 | 150 | 5 |
| DSPM-250 | 250 | 7.5 |
| DSPM-500 | 500 | 10 |
| DSPM-750 | 750 | 15 |
| DSPM-1000 | 1000 | 20 |
| DSPM-1250 | 1250 | 25 |
| DSPM-1500 | 1500 | 30 |
| DSPM-2000 | 2000 | 40 |
| DSPM-2500 | 2500 | 50 |
| DSPM-3000 | 3000 | 50 |
| DSPM-3500 | 3500 | 60 |

Note:

Please note that power mentioned is for dry mixing and can be varied depending upon densities of the material and speed of the mixer.

Blending time is minimum 30 seconds to 3 minutes depending upon the required CV and characteristics of material being mixed.



Features

- ▶ Various pelleting application include Poultry / Cattle feed Pellets, Organic Fertilizers Pellets, Plastic Waste Pellets, Manure Pellets, Gypsum Pellets, Micro Nutrient Pellets, Kaolin Pellets, biomass fuel pellets etc.
- ▶ We offer pellet mills which are capable of producing pellets of diameters ranging from 1 mm die to 20 mm die.
- ▶ Front door, Feed chute and conditioners are made of SS 304-grade stainless steel for long life.
- ▶ Feed chute is equipped with a magnet to arrest the ferrous material by going in to pelleting chamber.
- ▶ Both the pulleys are dynamically balanced along with the die assembly.
- ▶ One or more conditioners can be added for better cooking and digestibilities of the feed.

- * Capacity mentioned is of broiler finisher feed with 3mm die.
- * Capacity / Output of the Pellet Mill depends on hole diameter of die, Pellet thickness, speed of rotation, properties of materials being pelleted, quality of steam, etc.

Pelleting is a process to compact finely pulverized material into firm mass of a required shape and size by extruding it through a metallic ring die. Finely ground material is fed into the Pellet Mill through a feeder and then pressed into a rotating ring die with the help of two press rolls free to rotate on their respective shafts. The resulting pressure compresses the material and extrudes it through the holes in the die.

Steam is mixed in the feed to decrease the friction and for better cohesion. High temperature of steam results in gelatinization of raw starch present in vegetation ingredients. Steaming also increases digestibility of the feed

Residence time inside the conditioner can be changed by either altering the speed or by adjusting the angle of paddles. Auto lubrication systems ensures proper lubrication to all the bearings.

PELLET MILL (Poultry Feed / Cattle Feed)

| Model | Inner Dia | Power (H.P) | Poultry Feed (TPH) | Cattle Feed (TPH) |
|----------------|-----------|-------------|--------------------|-------------------|
| KAPM 305 - 50 | 305 | 40 - 60 | 1 to 1.5 | 0.8 |
| KAPM 305 - 75 | 305 | 60 - 75 | 2 to 2.5 | 1.25 |
| KAPM 420 - 120 | 420 | 120 - 150 | 4 to 5 | 3.5 |
| KAPM 520 - 150 | 520 | 150 - 180 | 7 to 8 | 6 |
| KAPM 600 - 220 | 600 | 220 - 250 | 8 to 10 | 7.5 |
| KAPM 630 - 250 | 630 | 250 - 270 | 12 to 15 | 12 |

The **Khare Agromech Counter Flow Cooler (KACF)** is very effective for cooling the pellets coming out from pellet mill which are required to be cooled near room temperature and to remove excess moisture and heat so as to improve the shelf life. The counter flow cooling principle is adopted in this cooler.

Counter Flow Cooler

| Model | Capacity (TPH) | Power (H.P) | Air Lock / HP |
|-------------|----------------|-------------|---------------|
| KACFC 10x10 | 1 to 1.5 | 1 | 8" / 0.5 |
| KACFC 12x12 | 2 to 2.5 | 1 | 10" / 1 |
| KACFC 14x14 | 4 to 5 | 1 | 10" / 1 |
| KACFC 16x16 | 7 to 8 | 2 | 12" / 2 |
| KACFC 18x18 | 8 to 10 | 2 | 12" / 2 |
| KACFC 20x20 | 12 to 15 | 2 | 14" / 2 |

- * Capacity mentioned is for broiler finisher/ layer formulation on 8mm dia hole screen.
- * Capacity depends by characteristic of material and hole dia of screen.

Salient features :-

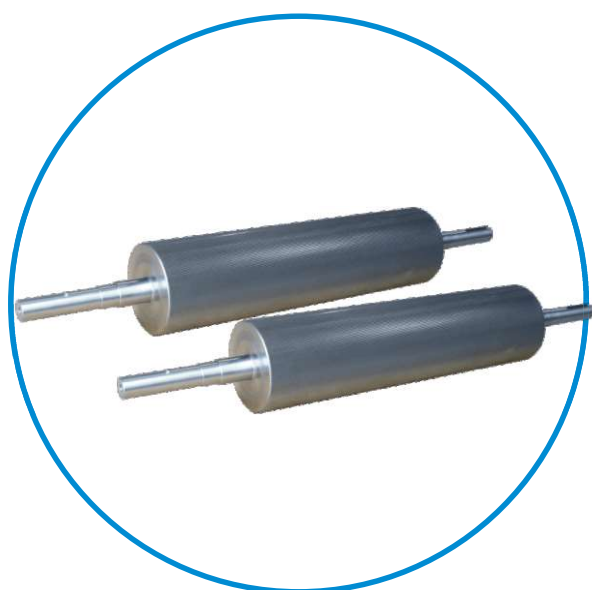
- First in first out principle ensures complete cooling of the pellets to improve working efficiencies a unique pellet distributor is used at top of the counter flow cooler to distributes the pellets evenly in cooling chamber.
- Level sensor are provided with timer to control level of pellets inside the cooling chamber.
- Minimum pellet breakage.
- Unique sliding valve discharger ensures 100 % clean out.
- Side wall and upper taper cone are in S.S. 304 and reinforced with M.S. pipes, hard glass inspection door.
- Solid base.



Pneumatic Pellet Cooler



Motorised Pellet Cooler



The **Khare Agromech Counter Flow Cooler (KACF)**

is meant to reduce the pellet in small pieces by passing through the rollers rotating at different speed having grooves on its periphery. The pellets are fed into the crumbler after cooling operation. The fineness of the end product can be varied by adjusting the distance between crumbler rollers. There is also a bypass device enabling the flow of pellets to be directed around the crumbler. This bypass is available with manual or remote control.

Salient features :-

- The crumbler rollers are made of very durable chilled cast iron thus reducing the operational cost.
- Roller are easy to exchange.
- One roller is fixed and other is adjustable & Spring loaded in order to adjust the gap between two rollers. Roller gap can vary from 0 to 10 mm.
- Rollers are dynamically balanced.
- Rigid construction.
- Capacitation available from 2.5 to 15 TPH.

* Capacity mentioned is for broiler finisher/ layer formulation on 8mm dia hole screen.

* Capacity depends by characteristic of material and hole dia of screen.

| Model | Size | Power (H.P) | Capacity (TPH) |
|----------|------|-------------|----------------|
| KACR 1.5 | 500 | 2 | 1 to 1.5 |
| KACR 2.5 | 600 | 3 | 2 to 2.5 |
| KACR 5 | 800 | 5 | 4 to 5 |
| KACR 7.5 | 1000 | 7.5 | 7 to 8 |
| KACR 10 | 1200 | 10 | 8 to 10 |
| KACR 15 | 1400 | 12.5 | 12 to 15 |

Inclined Vibro Sieve



- Rigid Construction for Smooth operation.
- At Inlet of the sieve the Incoming Product is Evenly distributed of the whole width of Sieve.
- Designed so that the Screen Length is kept more for Fast & Efficient operation.
- Screen changing time is very less.
- Less consumption of Power.
- Mounted on Soft Springs which ensures all dynamic vibrations are transferred to the sieving action.

| MODEL | Motor KW | CAPACITY TPH |
|-------------------|----------|--------------|
| KAVS-3060 | 0.7 x 2 | 3 |
| KAVS-4080 | 0.7 x 2 | 7 |
| KAVS-5090 | 1.0 x 2 | 10 |
| KAVS-50100 | 1.5 x 2 | 15 |

Gyrosieve

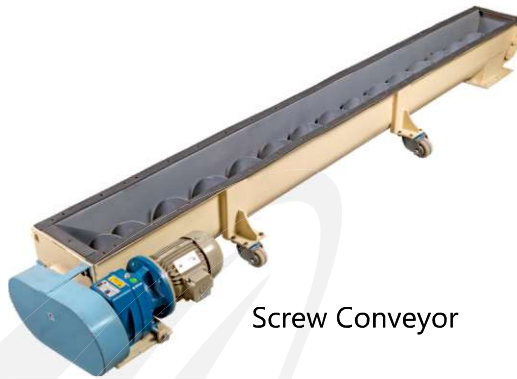


- Rigid Design ensures smooth operation.
- Two & more stages with different screen sizes are available.
- Easy to change screen.
- This can be used for Pellets, Crumbs & Different Powders or any other separation operation also.

| MODEL | Motor KW | CAPACITY TPH |
|------------------|----------|--------------|
| KAGS-360 | 1.5 | 3 |
| KAGS-772 | 2.2 | 7 |
| KAGS-1084 | 3.7 | 10 |
| KAGS-1596 | 5.5 | 15 |



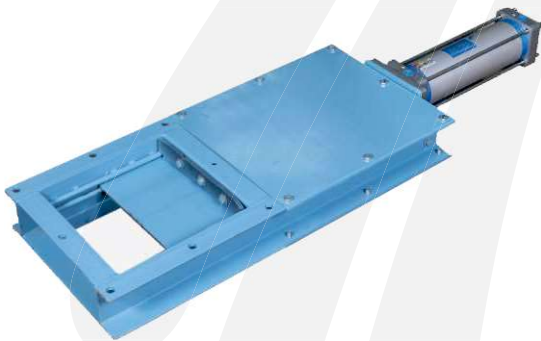
Bucket Elevator



Screw Conveyor



Drag Chain Conveyor



Slide Gate



Rotary Distributor



Air Lock



Hoppers



Wooden Slat Conveyor



Pulse Jet Dust Collector

We have Our independent division for Designing & Manufacturing all types of Conveyers & Material Handling Equipments. Like Bucket Elevators, Vertical/Horizontal Screw Conveyors, Drag Chain Conveyors, Wooden Slat Conveyor, Rotary Distributor etc.

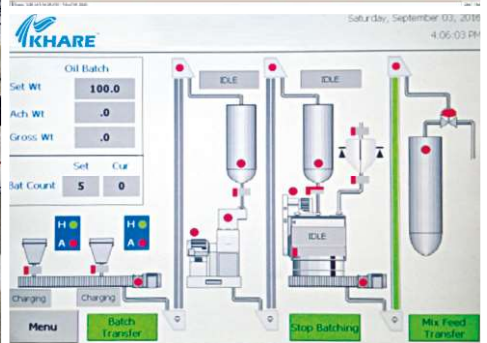
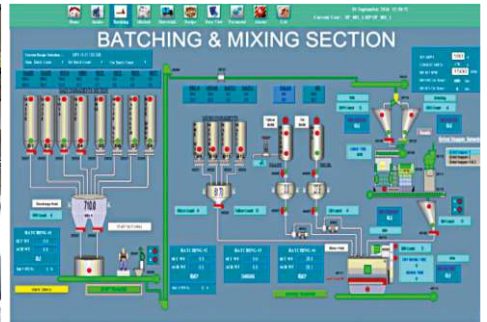
For Successful Plant Operation Accurate weighing is an Important Part right from Storage to Bagging.

As per the Formulation right Mixing of Raw Materials , Micro Nutrients, Liquid Ingredients is very Important from the Quality Point of View.

Khare Agromech Provides sophisticated weighing & proportioning systems which are controlled by sophisticated PLC based SCADA Systems.

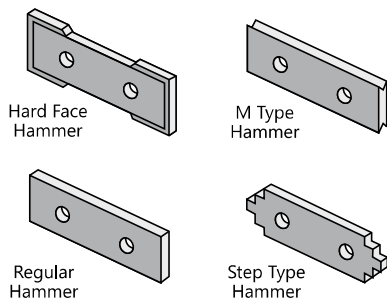
In this Automation Systems Batch Weighing , High Level/ Low Level Sensors for Storage Hoppers, Inter locking, Mixing Cycle Monitor, Vitamin Additives & Trace Material addition Controls, Liquid, Fat, Oil, Molasses Dosing Systems , Auto Bagging Systems are included.

We provide Wide Range of Packing Solutions Like Net Type bagging Machine with Bag Stitching facility.

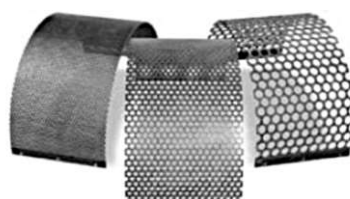
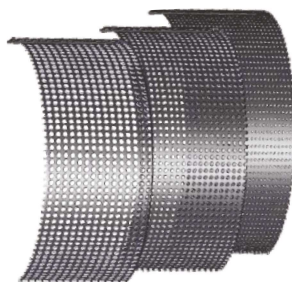




Spares



Hammers



Screens



Dies & Rollers



- Ethiopia
- Senegal
- UAE
- Nepal
- Bangladesh
- Shri Lanka
- Zimbabwe
- Tanzania
- Kenya
- Ghana
- Zambia
- Uganda
- Ivory De cote (Costal Africa)



Khare Agro-Mech Industries Pvt. Ltd.
An ISO 9001 - 2015 Certified Company

Factory : B-7/14, M.I.D.C. Miraj - 416 410.
Phone : +91- 90110 71729, +91-98508 37600
+91-90110 74208
E-mail : sales@kharegroup.com
khareagromech@gmail.com
Website : www.kharegroup.com
www.khareagromech.com

Visit our Website
for more Details



www.khareagromech.com

